

FOR IMMEDIATE RELEASE

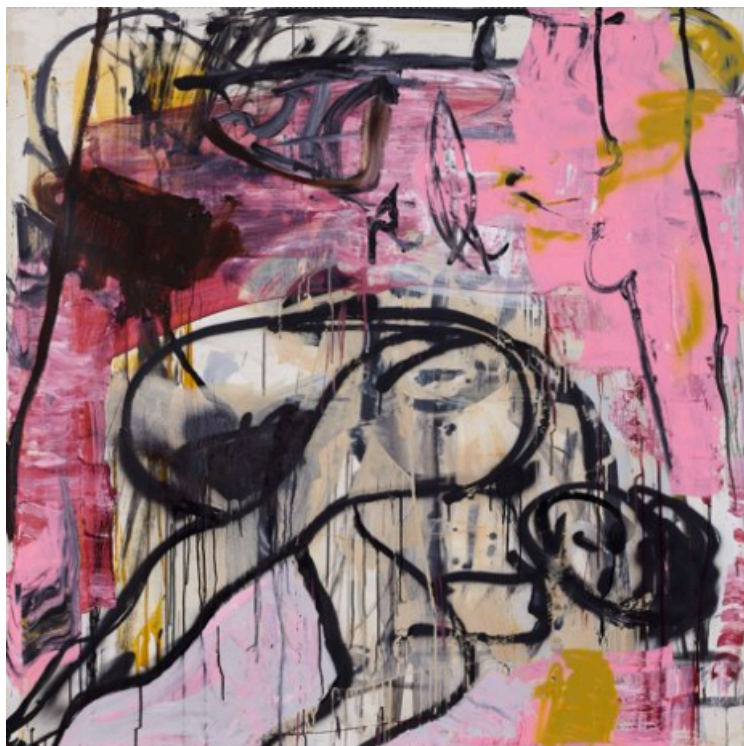
Albertz Benda Presents
Tsibi Geva: Jolt

On view October 12 – November 18, 2017
515 West 26th Street
New York, NY

Opening Reception:
October 12, 6 – 8pm



Untitled, 2017
Oil and acrylic on canvas
59 x 47 1/4 inches, 150 x 120 cm



Untitled, 2016
Acrylic on canvas
59 x 59 inches, 150 x 150 cm

New York, NY. July 05, 2017 - Albertz Benda is pleased to present **Tsibi Geva: Jolt**, a solo exhibition of new and recent work by one of Israel's most critically acclaimed artists, on view from October 12 – November 18, 2017. Having shown in New York with Annina Nosei for the past two decades, it will be the artist's first exhibition at Albertz Benda, featuring a new body of work and selected pieces from his solo presentation in the Israeli Pavilion at the 2015 Venice Biennale.

In his latest series of paintings, Geva addresses concepts such as migration, instability and disintegration from a sociopolitical perspective and within the medium of painting itself. The layers of paint on the canvas alternately reveal and obscure fragments of bodies, architectural structures, and natural elements. These layered compositions confront the physicality of the materials while reflecting personal and cultural discourses.

Geva delves into his psyche through a process of spontaneous mark-making and expressive gesture in the spirit of- but not defined by- abstract expressionism while also channeling the atmosphere of his surroundings. In works such as *Untitled, 2017*, the rounded forms and flowing paint flirt with representation, evoking an aerial landscape, a shrouded, injured figure, a hole or a wound. As Geva explains, "there is a deep and mysterious relationship between a landscape and a cultural or political environment."

albertz benda

515 w 26th st | new york, ny | 10001
tel 212.244.2579 | www.albertzbenda.com

Addressing many of the same questions as his abstract works, Geva's recent figurative work introduces an increasingly sensual aspect. *Untitled* 2016 depicts a figure curled into a fetal position, whose gender and expression is ambiguous. The subject is at once vulnerable yet possibly challenging the viewer; the pink swathes of paint throughout the composition can either be energizing or lurid. "An image may be charged with cultural or symbolic meaning and completely devoid of such meaning at the same time, and this dialectic is fundamental to my work," says Geva.

About Tsibi Geva

Born in 1951 at Kibbutz Ein Shemer, Israel, Geva lives and works in Tel Aviv, Israel and Brooklyn, New York. He received a BFA from the Beit Berl School of Arts, Israel and proceeded to study at the New York Studio School, New York.

He has had numerous solo exhibitions at international institutions include the Institute of Contemporary Art, Boston; The American University Museum, Washington, DC; MACRO Testaccio Museum, Rome; Mönchenhaus – Museum of Modern Art in Goslar, Germany, and at Israel's leading museums, including the Haifa Museum of Art; the Ashdod Art Museum, Monart Center; The Israel Museum, Jerusalem; and a retrospective at the Tel Aviv Museum of Art. From 1990 to 2005 Geva was represented in New York by Annina Nosei Gallery.

His work is found in the permanent collection of the Israel Museum, Jerusalem; The Museum of Modern Art, New York; The Rothfeld Collection, Washington DC; The Burger Collection, Zurich; The Jewish Museum, New York; and the Tel Aviv Museum of art among others. In 2015, Geva was chosen to represent Israel at the 2015 Venice Biennale.

About Albertz Benda

Albertz Benda opened in fall 2015 and is devoted to a contemporary visual arts program focusing on rediscoveries as well as new introductions — from seminal figures in their field whose work warrants further exploration to debut presentations of artists that are new to New York.

Follow Albertz Benda on [Facebook](#) and [Instagram](#) via the hashtag [#AlbertzBenda](#)

####

Media Contacts

For further information, images or to arrange interviews, members of the media may contact:

Kat Mills
Blue Medium, Inc.
+1 (212) 675-1800
kat@bluemedium.com

albertz benda

515 w 26th st | new york, ny | 10001
tel 212.244.2579 | www.albertzbenda.c