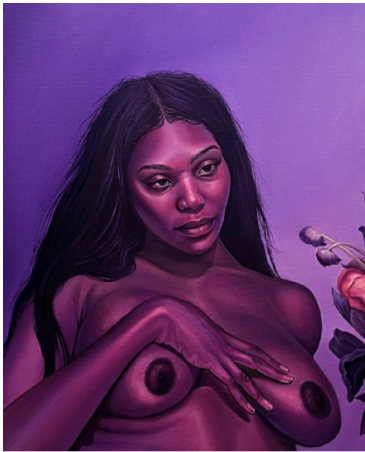


# albertz benda

**ALBERTZ BENDA LOS ANGELES ANNOUNCES GROUP EXHIBITION FEATURING  
DUSTIN HAREWOOD, LANISE HOWARD, LARISSA DE SOUZA, NATALIE WADLINGTON,  
ROBERT PETERSON, ANGELA ANH NGUYEN AND SYDNIÉ JIMENEZ**

Titled *Do You See Me?*, the exhibit will be on display from February 15 - March 18, 2023

Opening Reception to occur Wednesday, February 15, 2023 from 12 – 6 pm



(Left) Lanise Howard. *Sitting with These Violet thoughts, and the distance between us*, 2022. Oil on canvas. 30 x 24 inches | 76 x 61 cm.



(Middle) Robert Peterson. *From the Heart*. Oil on canvas. 30 x 24 inches | 76 x 61 cm.



(Right) Sydnie Jimenez. *Green Bang Clown*, 2022. Ceramic, slip, glaze. 15 x 3x 2 inches | 38 x 7.5x 5 cm. And *Black Romper*, 2022. Ceramic, slip, glaze. 15 x 3 x 2 inches | 38 x 7.5 x 5 cm.

**LOS ANGELES, CA** - albertz benda Los Angeles is pleased to present, *Do You See Me?*, a group exhibition bringing together seven artists' ongoing explorations of identity through their respective mediums of painting, collage, and sculpture. Engaging with figuration to explore their own subjectivities, these artists embrace representation to further social, political, and theoretical dialogues.

Oklahoma-based painter Robert Peterson focuses on capturing the quiet heroism of daily life within Black communities. Peterson paints skin with a striking emphasis on bold color and strong contrasts. The result is a polychromatic, joyous, and exuberant expression of love for Blackness itself.

Similarly entranced by the beauty of Black bodies and the prismatic quality of light, Lanise Howard integrates her female protagonists within fantastical, idyllic nature scenes. Her work examines femininity through the lens of the surreal, borrowing visual cues from sacred geometry and the esoteric.

Natalie Wadlington takes her observations of the elusive connection between humans and the natural world one step further in her symbolic paintings. Flattening and skewing perspectival space, Wadlington places her figures in expansive outdoor scenes rendered with impossibly vivid colors and streamlined geometries that speak to the subject's state of mind.



Natalie Wadlington.  
*Worms under Stepping Stones*,  
2022. Oil on canvas. 60 x 60  
inches | 152.5 x 152.5 cm

"Looking inwards to outwards, drawing on their own lived experiences, the seven artists in *Do You See Me?* confront us with stylized protagonists that exemplify an idealized version of the communities within which they live." shares co-founder, Thorsten Albertz.



Larissa de Souza, *Capitão*, 2021. Acrylic paint, mica pearl and oil chalk on canvas. 74 3/8 x 60 1/4 inches | 189 x 153 cm.

Brazilian painter Larissa de Souza's multi-media acrylic paintings incorporate fabric and embroidery in their reflections on femininity, legacy, and family bonds. Often resembling pages from scrapbooks or framed family photos, these works aim to preserve the artist's memories on canvas, resisting the historical erasure of the Afro-Brazilian population while also crafting new narratives of what it means to be a Black woman in Brazil.

Collaging his works on paper with found materials such as plastic packaging, Dustin Harewood's figurative works add literal dimensionality with their frieze-like structures. With a visual vocabulary that draws from 90s cartoons and contemporary toys, his work skews toward a darker subject matter and explores a range of topical issues from climate change to racial inequality.



Dustin Harewood. *KO'd Kayvon*, Watercolor and ink on plastic. 12 x 7 inches | 30.5 x 18 cm.

Ceramicist Sydnie Jimenez brings the investigation of identity into three-dimensional form with her figurative sculptures of stylish, young people with ambiguous racial backgrounds. Echoing the style of both Mesoamerican pottery and notebook doodles, these works engage with the past while remaining firmly rooted in the present as a challenge to popular culture's toxic Eurocentric foundation.

Textile artist Angela Anh Nguyen's meticulously tufted rugs subvert archetypes of American society from a working-class perspective. Her figurative rugs present life-size caricatures drawn from our chaotic modern age that speak to our general state of anxiety with a sense of humor and understanding.

### **ABOUT ALBERTZ BENDA**

Founded in 2015, albertz benda is a contemporary art gallery with an international program exploring material and textility as well as cultural and social dialogues. Our Chelsea space is host to rotating exhibitions with an emphasis on solo presentations of emerging artists, new research into historic figures, and thematic group exhibitions. In 2021, the gallery expanded to a second location in Los Angeles. Featuring an evolving identity separate from our New York program, the LA space is realized within the context of a domestic setting, advancing new connections between visual arts, craft, and design.

Website: [www.albertzbenda.com](http://www.albertzbenda.com)

Instagram: [@albertzbenda](https://www.instagram.com/albertzbenda)

### **Contact:**

Charles Hickey

e: [charles@albertzbenda.com](mailto:charles@albertzbenda.com)

t: +1 310 913 3269

### **Press & Media Inquiries:**

PURPLE

e: [AB\\_FB\\_LA@purplepr.com](mailto:AB_FB_LA@purplepr.com)