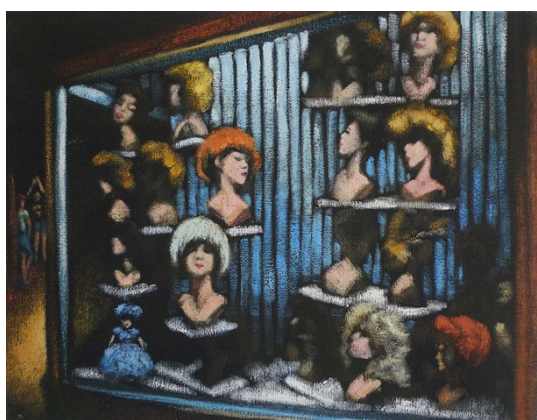


FOR IMMEDIATE RELEASE

***Fragmented Bodies***  
**February 27 – April 18, 2020**  
**albertz benda, New York**

Farley Aguilar, Del Kathryn Barton, Margot Bergman, Sharif Bey, Louise Bonnet, Gabriella Boyd, Coady Brown, Judy Chicago, Jaclyn Conley, Timothy Curtis, Jane Dickson, Christina Forrer, Natalie Frank, Tsibi Geva, Michael Hilsman, Dorothy Iannone, Niki Johnson, Kiki Kogelnik, Doron Langberg, Amaryllis DeJesus Moleski, Christopher Myers, Rashaad Newsome, Gladys Nilsson, Anna Park, Patrick Quarm, Kelly Reemtsen, Jamea Richmond-Edwards, Dennis Scholl, Joan Semmel, Paul Mpagi Sepuya, Stephen Towns, Grace Weaver, Darryl Westly, Robin F Williams, Jason Bard Yarmosky, Allison Zuckerman



(Left) Jane Dickson, *Wigshop 3*. Courtesy of the artist and Nathalie Karg Gallery. (Center) Jason Bard Yarmosky, *Wonder Women*, 2019. Courtesy of the artist. (Right) Paul Mpagi Sepuya, *Darkroom Mirror Portrait*, 2017. Courtesy of the artist and Team (Gallery, Inc.)

**New York, NY** – *albertz benda* is pleased to present *Fragmented Bodies*, a group exhibition examining the ways in which the accelerated visual culture of the past five decades has influenced depictions of the human form. On view from February 27 through April 18, 2020 the show comprises works by international artists working across painting, photography, and drawing.

The immediacy of information afforded by new technologies and the proliferation of social media simultaneously promote connectivity and fragmentation; it is possible to peer into the lives of others for a brief moment or in continuous streams. Images presented as self-narrativization are consumed, analyzed, and reinterpreted, blurring boundaries between private and public.

Living and working within this context, the artists in this exhibition have created pieces that reflect both fluid and fractured aspects of identity. By manipulating and recontextualizing the body among continuously evolving personal and cultural symbols, previously unrepresented subjects emerge from the familiar outlines of the human form.

This exhibition could not have been realized without the support of many esteemed colleagues and galleries from around the globe

**albertz benda**

515 w 26th st | new york, ny | 10001  
tel 212.244.2579 | [www.albertzbenda.com](http://www.albertzbenda.com)

## **About albertz benda**

Founded in 2015 by Thorsten Albertz and Marc Benda, albertz benda is devoted to an international contemporary visual arts program featuring rediscoveries as well as introductions — from seminal figures in their field whose work warrants further exploration, to debut presentations of artists that are new to New York. Follow albertz benda on Facebook and Instagram via the hashtag #albertzbenda

Opening hours:

Tuesday - Saturday, 10am - 6pm

Mondays by appointment



For further information or to request images, members of the media may contact  
Rachel Tretter | e: [rachel@albertzbenda.com](mailto:rachel@albertzbenda.com) | t: +1 (212) 244-2579

**albertz benda**

515 w 26th st | new york, ny | 10001  
tel 212.244.2579 | [www.albertzbenda.com](http://www.albertzbenda.com)